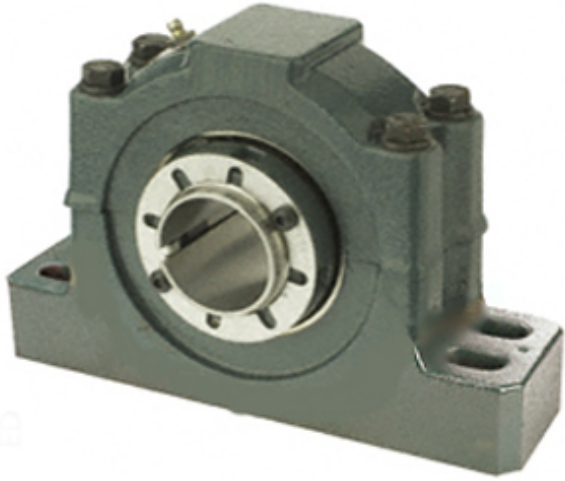




MACHINE PRECISION AXLE CORP.



2.688 Inch | 68.275 Millimeter x 3.5 Inch | 88.9 Millimeter x 3.5 Inch | 88.9 Millimeter DODGE P4B516-ISAF-211R Pillow Block Bearings

Bearing No. P4B516-ISAF-211R

P4B516-ISAF-211R Bearing 2D drawings and 3D CAD models

Category	Pillow Block Bearings
Inventory	0.0
Manufacturer Name	ABB MOTORS AND MECHANICAL INC
Minimum Buy Quantity	N/A
Weight	14.528
EAN	0782475324606
Product Group	M06288
Number of Mounting Holes	4
Mounting Method	Adapter Sleeve
Housing Style	4 Bolt Pillow Block
Rolling Element	Spherical Roller Bearing
Housing Material	Cast Iron
Expansion / Non-expansion	Non-expansion
Mounting Bolts	5/8 Inch
Relubricatable	Yes
Insert Part Number	INS-IP-211R
Seals	Triple Lip Contact
Housing Configuration	2 Piece Split
Inch - Metric	Inch
Other Features	Double Row Has Flinger
Long Description	4 Bolt Pillow Block; 2-11/16" Bore; 3-1/2" Base to Center Height; Adapter Sleeve Mount; Spherical Roller Bearing; 9-7/8"



MACHINE PRECISION AXLE CORP.

	Minimum Bolt Spacing; 11" Bolt Spacing Maximum; Relubricata
Category	Pillow Block
UNSPSC	31171511
Harmonized Tariff Code	8483.20.40.80
Noun	Bearing
Keyword String	Pillow Block
Manufacturer URL	http://www.dodge-pt.com
Manufacturer Item Number	P4B516-ISAF-211R
Manufacturer Internal Number	070094
Weight / LBS	32
Bolt Spacing Minimum	9.875 Inch 250.83Millimeter
D	3.5 Inch 88.9 Millimeter
Actual Bolt Center to Center	0 Inch 0Millimeter
Nominal Bolt Center to Center	10.4 Inch 264.2 Millimeter
B	3.5 Inch 88.9 Millimeter
Bolt Spacing Maximum	11 Inch 279.4Millimeter
d	2.688 Inch 68.275 Millimeter