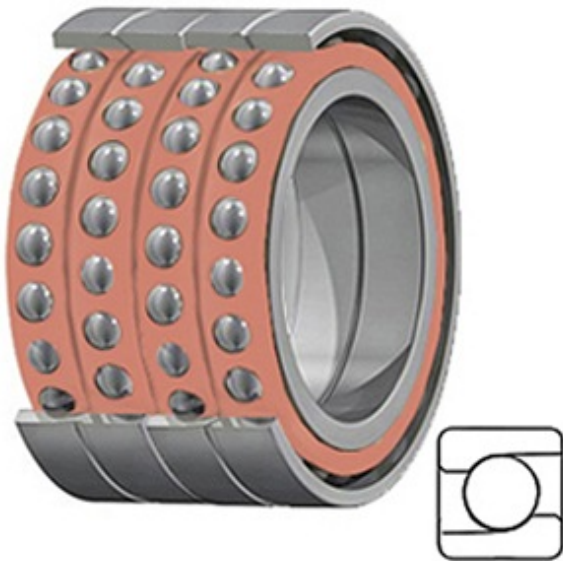




# MACHINE PRECISION AXLE CORP.



1.969 Inch | 50 Millimeter x 3.937 Inch | 100 Millimeter x 3.15 Inch | 80 Millimeter TIMKEN MM50BS100QH Precision Ball Bearings

Bearing No. MM50BS100QH

MM50BS100QH Bearing 2D drawings and 3D CAD models

Category	Precision Ball Bearings
Inventory	0.0
Manufacturer Name	TIMKEN
Minimum Buy Quantity	N/A
Weight	0
Product Group	B04270
Enclosure	Open
Precision Class	ABEC 7   ISO P4
Material - Ball	Steel
Number of Bearings	4 (1 Quadruplex Set)
Contact Angle	60 Degree
Preload	Heavy
Raceway Style	1 Rib Inner Ring and Outer Ring
Cage Material	Nylon
Rolling Element	Ball Bearing
Mounting Arrangement	Quadruplex-Universal
Flush Ground	Yes
Inch - Metric	Metric
Other Features	Single Row   Angular Contact   Ball Screw Support   Super Precision   With Tighter Lateral Eccentricity
Long Description	50MM Bore; 100MM Outside Diameter; 80MM Width; Open Enclosure;



## MACHINE PRECISION AXLE CORP.

	ABEC 7   ISO P4 Precision; Steel Ball Material; 4 (1 Quadruplex Set) Bearings; 60 Degree Contact Angle; Nylon Cage Material; 1 Rib Inner
Category	Precision Ball Bearings
UNSPSC	31171531
Harmonized Tariff Code	8482.10.50.28
Noun	Bearing
Keyword String	Ball Angular Contact
Manufacturer URL	<a href="http://www.timken.com">http://www.timken.com</a>
Weight / LBS	6.47
D	3.937 Inch   100 Millimeter
d	1.969 Inch   50 Millimeter
B	3.15 Inch   80 Millimeter