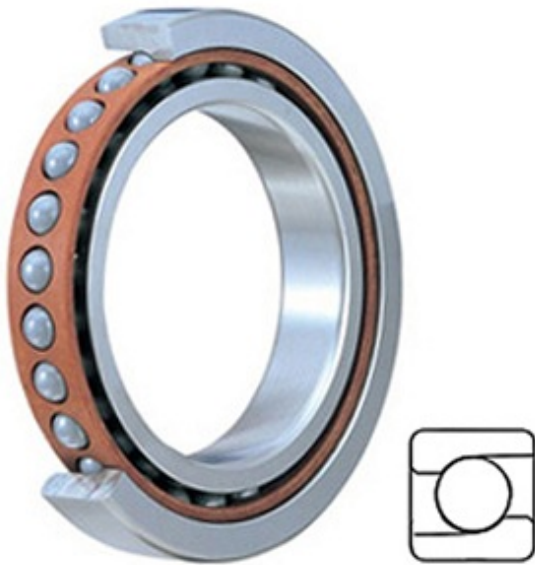




# MACHINE PRECISION AXLE CORP.



2MMV9306HX SUM Bearing 2D drawings and 3D CAD models

1.181 Inch | 30 Millimeter x 1.85 Inch | 47 Millimeter x 0.354 Inch | 9 Millimeter TIMKEN 2MMV9306HX SUM Precision Ball Bearings

Bearing No. 2MMV9306HX SUM

Category	Precision Ball Bearings
Inventory	0.0
Manufacturer Name	TIMKEN
Minimum Buy Quantity	N/A
Weight	0.05
Product Group	B04270
Enclosure	Open
Precision Class	ABEC 7   ISO P4
Material - Ball	Steel
Number of Bearings	1 (Single)
Contact Angle	15 Degree
Preload	Medium
Raceway Style	1 Rib Inner Ring and Outer Ring
Cage Material	Phenolic
Rolling Element	Ball Bearing
Mounting Arrangement	Universal
Flush Ground	Yes
Inch - Metric	Metric
Other Features	Single Row   Angular Contact   Super High Precision
Long Description	30MM Bore; 47MM Outside Diameter; 9MM Width; Open Enclosure; ABEC 7   ISO P4 Precision; Steel Ball Material; 1



## MACHINE PRECISION AXLE CORP.

	(Single) Bearings; 15 Degree Contact Angle; Phenolic Cage Material; 1 Rib Inner Ring and
Category	Precision Ball Bearings
UNSPSC	31171531
Harmonized Tariff Code	8482.10.50.28
Noun	Bearing
Keyword String	Angular Contact Ball
Manufacturer URL	<a href="http://www.timken.com">http://www.timken.com</a>
Manufacturer Item Number	2MMV9306HX SUM
Weight / LBS	0.11
B	0.354 Inch   9 Millimeter
d	1.181 Inch   30 Millimeter
D	1.85 Inch   47 Millimeter