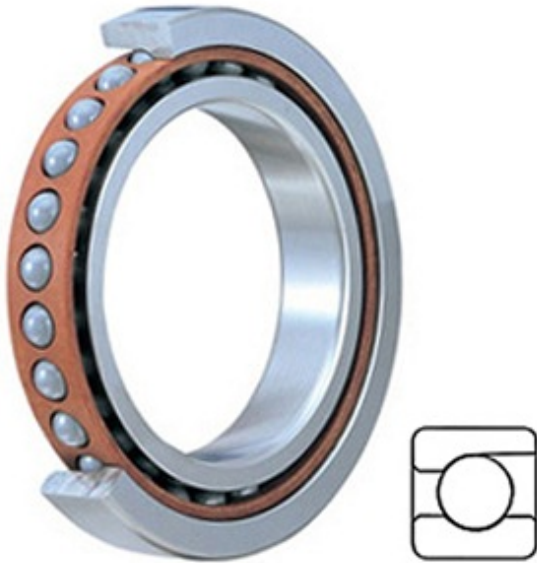




MACHINE PRECISION AXLE CORP.



B/E2207PE1UL Bearing 2D drawings and 3D CAD models

0.787 Inch | 20 Millimeter x 1.85 Inch | 47 Millimeter x 0.551 Inch | 14 Millimeter SKF B/E2207PE1UL Precision Ball Bearings

Bearing No. B/E2207PE1UL

Category	Precision Ball Bearings
Inventory	0.0
Manufacturer Name	SKF
Minimum Buy Quantity	N/A
Weight	0
Product Group	B04270
Enclosure	Open
Precision Class	ABEC 7 ISO P4
Material - Ball	Steel
Number of Bearings	1 (Single)
Contact Angle	15 Degree
Preload	Light
Raceway Style	1 Rib Outer Ring
Cage Material	Polyamide
Rolling Element	Ball Bearing
Mounting Arrangement	Universal
Flush Ground	Yes
Inch - Metric	Metric
Other Features	Single Row Angular Contact
Long Description	20MM Bore; 47MM Outside Diameter; 14MM Width; Open Enclosure; ABEC 7 ISO P4 Precision; Steel Ball Material; 1 (Single) Bearing; 15 Degree Contact Angle; Polyamide



MACHINE PRECISION AXLE CORP.

	Cage Material; 1 Rib Outer Ring Rac
Category	Precision Ball Bearings
UNSPSC	31171531
Harmonized Tariff Code	8482.10.50.28
Noun	Bearing
Keyword String	Ball Angular Contact
Manufacturer URL	http://www.skf.com
B	0.551 Inch 14 Millimeter
D	1.85 Inch 47 Millimeter
d	0.787 Inch 20 Millimeter